



1. Product Name

- SESCO White Portland Cement Type I
- SESCO White Pool Cement
- SESCO White Type III Cement

2. Manufacturer

SESCO Cement Corporation
 8510 E. Sam Houston Pkwy N.
 Houston, TX 77044

Phone: (844) SESCO-US
 (713) 814-5000

Web: www.sescocement.us

3. Product Description

Basic Use

SESCO White Portland Cement is a basic building material, which is used in a wide variety of commercial and architectural concrete construction applications. Its uses include:

- | | |
|--------------------------|--|
| ■ Architectural Precast | ■ Glass Fiber Reinforced Concrete (GFRC) |
| ■ Cast Stone | ■ High-vis Median Barriers |
| ■ Ornamental Statuary | ■ Reflective Pavements |
| ■ Concrete Masonry Units | ■ Stucco |
| ■ Swimming Pools & Spas | ■ Terrazzo |
| ■ Formulated Products | ■ Grout |
| ■ Floor Tiles | ■ Concrete Countertops |
| ■ Roof Tiles | |

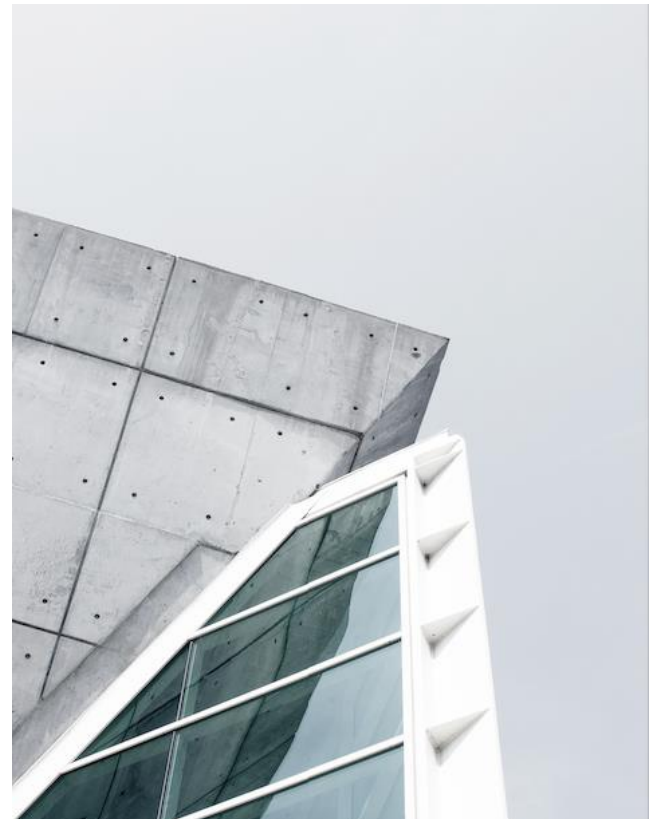
Composition & Materials

SESCO White Portland Cement is a true portland cement manufactured with premium Egyptian white limestone, kaolin and white sand. Care is used in the selection of raw materials to insure negligible amounts of iron and manganese oxides to achieve the highest level of color consistency and whiteness.

All SESCO manufacturing is quality controlled to ensure product performance and uniformity.

Types

- **Type I/II** – General Use
- **Pool** – Pool Finishes
- **Type III** – High Early Strength



Packaging

SESCO White Portland Cement is supplied in bulk quantities (tons) or 92.6 lb. (42 kg) bags for Type I or bulk quantities (tons) for Type III. SESCO Pool Cement is supplied in 94 lb (42.6 kg) bags. SESCO White Portland Cement is shipped by rail, barge and/or truck.

Limitations & Disclaimers

There are many variables that affect concrete performance beyond the control of the cement manufacturer. Good concreting practices are required in order to achieve desired results.

Attention must be given to formwork, batching, mixing, placing, finishing and curing. In special applications, selection of aggregates, admixtures and additives may need to be evaluated.

4. Technical Data

Applicable Standards

ASTM International [ASTM C150](#)

Physical Properties

| White Portland/Pool Cement Type I | | |
|---|------------------------------------|--------------------------------|
| Physical Property | SESCO White Portland (Pool) Type I | ASTM C150 Specification Type I |
| Fineness Specific Surface (m ² /kg) | 447 (405) | ≥ 260 |
| Setting Time – Vicat Minutes not less than not more than | 130 (105) | 45 375 |
| Air Content % | 10 (10) | ≤ 12 |
| Compressive Strength, psi | | |
| 1 day | 3260 (3990) | – |
| 3 day | 5680 (6070) | 1740 |
| 7 day | 6770 (7060) | 2760 |
| 28 day | 7940 (7450) | – |

| White Type III Cement | | |
|--|-----------------------------|----------------------------------|
| Physical Property | SESCO White Cement Type III | ASTM C150 Specification Type III |
| Fineness Specific Surface (m ² /kg) | 604 | – |
| Setting Time – Vicat Minutes not less than not more than Final Set | 85 260 | 45 375 |
| Air Content % | 8 | ≤ 12 |
| Compressive Strength, psi (MPa) | | |
| 1 day | 5220 (36.0) | 1740 (12.0) |
| 3 day | 7830 (54.0) | 3480 (24.0) |
| 7 day | 8310 (57.3) | – |
| 28 day | 9760 (67.3) | – |

5. Installation

SESCO White Cement should be approved as to color and surface texture by the architect prior to use.

6. Availability and Cost

Availability

SESCO Cement is available in bulk shipments or bags from our terminals by rail or truck to most parts of the United States. Bagged product is available through distribution throughout most of the United States.

Cost

SESCO Cement products are competitively priced. For specific information contact a SESCO Cement distributor or a SESCO Cement representative. Bulk purchasers should contact SESCO Cement directly for pricing.

7. Warranty

The information and statements in SESCO technical and product information are believed to be reliable, but are not to be construed as a warranty or representation for which the manufacturer assumes legal responsibility. No other warranty, representation, or condition of any kind, expressed or implied (including no warranty of merchantability or fitness for a particular purpose) shall apply. Having no control over the use of cement, SESCO will not guarantee finished work, nor shall SESCO be liable for consequential damages.

8. Maintenance

No maintenance required.

9. Technical Services

Technical assistance, including more detailed information, product literature, test results, project list, samples, assistance in preparing project specifications and arrangements for job site inspection and supervision, is available by contacting SESCO Quality Control Department.

(844) 737-2687
quality@sescocement.us

10. Filing Systems

Additional Information is available from the manufacturer upon request.

